

Applications

It is used for switching lines into double line lubrication systems of grease or oil.

Features

- Operation for both grease or oil
- Cast aluminum body according to EN 1706 - AC-43100XX
- External zinc-plated protection
- Control of the operation by microcontroller



Description

The motorized reversers are particularly useful in double line lubrication systems to automate the alternating operation of the two lines. The equipment automatically pressurizes or releases the flow of lubricant from one line to the other according to the preset pressure.

Design and operating principle

This motorized reverser is specially designed for double line installations with medium pipe length. The operation of this automatic pressure switch is similar to that of a 4-way, 2-position valve. When the preset pressure is reached, the reversal starts, controlled by microcontrollers, thus allowing the regulation of the line.



Installation

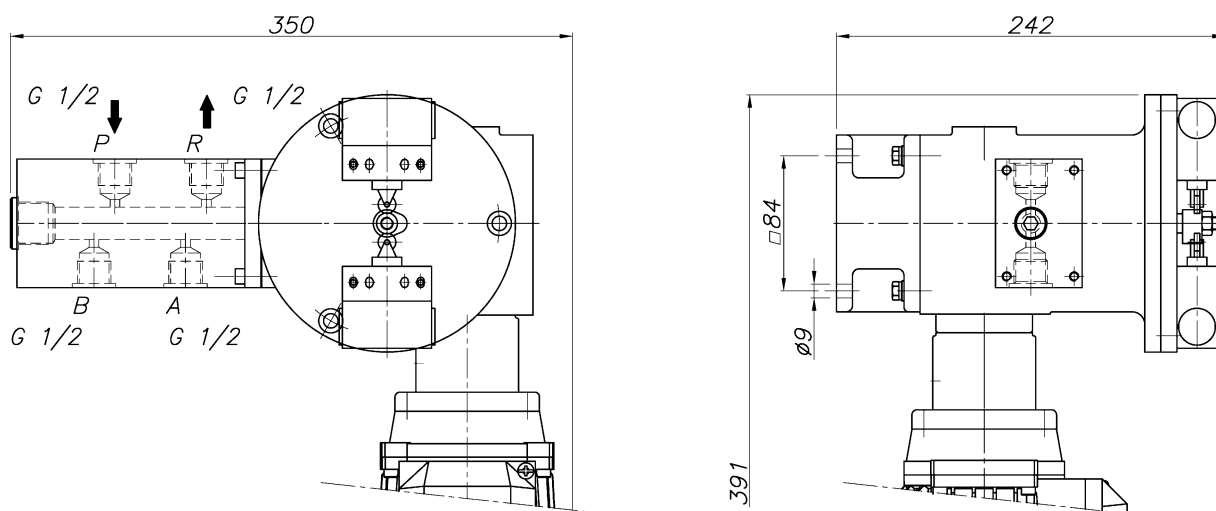
For proper operation, the pressure switch should be placed in the system at the beginning of the lubrication line, at the pump outlet.

Specifications

Flow	70 kg/h
Maximum working pressure	400 bar
Operating temperature	-20 °C / +80 °C
Inlet and outlet connections	G 1/2
Raccord de retour	G 1/2
Corps	Cast aluminum according to EN 1706 - AC-43100
Position de montage	Variable
Poids	12,3 kg.
Grease	NLGI 3 ASTM Max.
Dimensions	400x325x240 mm
Quality	Electroplated coating of zinc ISO 2081 - Fe/Zn12/A

Dimensional drawing

Dimensions in mm



Ordering information

ADD CODE DEPENDING ON ASSEMBLY

	22147	X	X	-XX
Valve model (See images pag. 1)				
A: 4 ways 2 positions, reversal		A		
B: 4 ways 2 positions, stop		B		
Motor				
Motor 63 A B14 0,12 kW. AC			1	
Motor 56 B B14 0.09 kW. DC			2	
Special code				
For non-standard elements				-XX

Electrical wiring diagram and technical data:

Contacts	1NC +1NO
Electrical protection	IP66 s/ EN/INC 60529
	IKOS s/ EN 50102
Intensity	AC 15 240 V 3 A ith 10 A
Breaking capacity	6 KV for 500 V
Cable entry	Pg 11
Standard	IEC/EN 60947-5-1
Frequency	50/60 Hz
Certifications	CCC
	CSA
	UL

Two poles
Snap action
NC+NO

