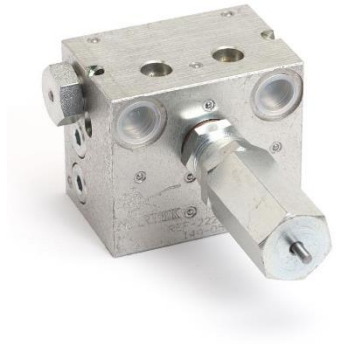


Applications

It is used for switching lines into double line lubrication systems of grease or oil

Features

- ▶ Robust body made of steel
- ▶ External zinc-plated protection
- ▶ Different possibilities of control
- ▶ Adjustable pressure range

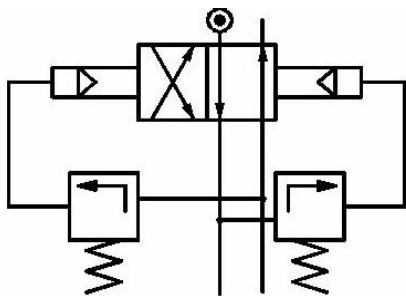


Description

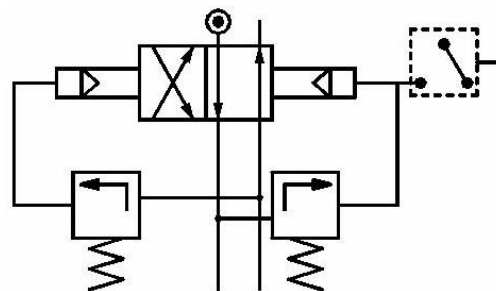
The overpressure reversers are especially useful equipment in double grease lines to have automated alternate operation of both lines. The equipment automatically pressurizes or relieves the lubricant flow from one line to the other depending on the predetermined pressure.

Design and operating principle

These overpressure reversers are mechanically actuated and specially designed for double line systems of medium length. Overpressure reverser works very similar to a two ways- two ports valve. If the pressure in the work line reaches the set pressure, an internal overpressure valve will open and command a piston to actuate against the other two pistons, one of them will switch the work line.



Schematic drawing without control



Schematic drawing with control detector

Installation

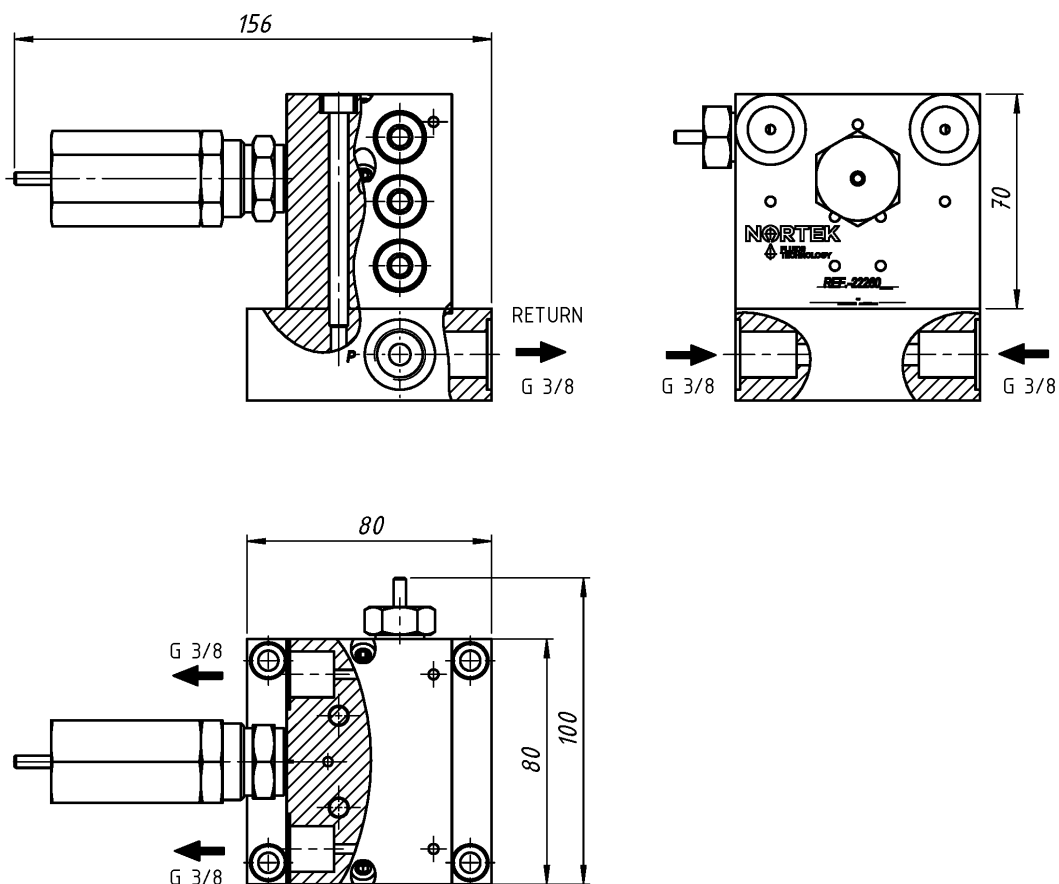
To ensure a correct operation, the location of the overpressure reverser in the installation must be at the beginning of the grease line, at the pump outlet.

Specifications

Flow	3 kg/h
Maximum working pressure	300 bar
Minimum working pressure	40 bar
Inlet / Outlet connections	G 3/8 female
Mounting position	Variable
Body	Steel EN10087 – 11SMnPb30 zinc-plated
Weight without baseplate	2,5 kg
Weight with baseplate	3,9 kg
Dimensions without baseplate	156x70x80 mm
Dimensions with baseplate	156x100x80 mm
Qualities	Electroplated coating of zinc ISO 2081 – Fe/Zn12/A

Dimensional drawing

Dimensions in mm



Ordering information

ADD CODE DEPENDING ON ASSEMBLY

	C03-	X	X	-XX
Operational control				
Visual		V		
Limit switch		I		
Inductive proximity sensor		D		
Installation				
On base plate			P	
On manual pump series BM3			B	
Código Especial				
Para elementos fuera del estándar				-XX