

Transportable manual pump BMT

Applications

Lubrication of fixed or moving parts that are difficult to automate in any type of industry.

Features

- Grease or oil lubrication
- Can be supplied with a 12 kg tank
- Built-in non-return valve
- Filter

Description

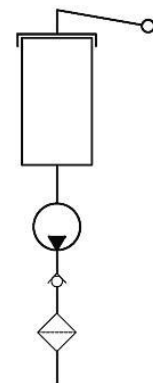
Manually operated pump to be immersed in a tank.
The tankless configuration is very useful as a secondary backup pump in case of failure of the main automated pump.
For added convenience, a transport cart is available for this pump.

Design and operating principle

It is a cane pump that, when manually operated, moves an internal plunger at the bottom of the cane that sucks in the lubricant and injects it at the outlet.

The pump is designed with a submersible suction cane. Nortek has specially designed a 12 kg capacity tank for this pump, but it can be installed in any tank or vessel.

This pump can also be operated without a suction cane, which is a great advantage because the more direct action avoids possible suction problems.

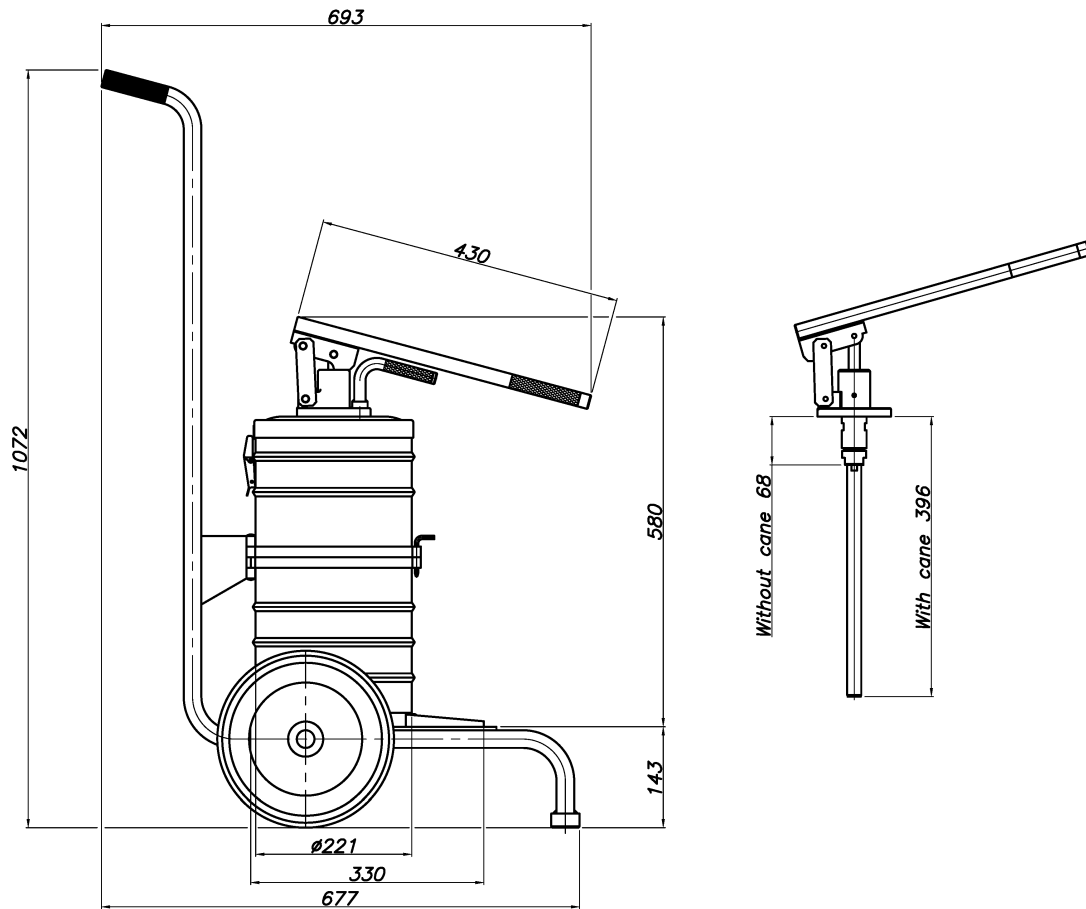


Specifications

Maximum working pressure	400 bar
Recommended working pressure	250 bar
Injection per cycle	5 cm ³
Outlet connection	Ø 12
Weight	3 kg (pump only)

Dimensional drawing

Dimensions in mm



Ordering information

Supplied with a 2 m hose. The hose connection to the lubrication point must be specified in the order.

ADD CODE DEPENDING ON ASSEMBLY

	BMT-	X	-XX
Specifications			
Manual pump without cane, without tank and without transport cart		N	
Manual pump with cane, without tank and without transport cart		C	
Manual pump with cane, with tank and without transport cart		D	
Manual pump with cane, with tank and with transport cart		T	
Special code			
For non-standard elements			-XX