

Applications

Lubrication of bearings and moving parts of small machines with a reduced number of lubrication points.

Features

- ▶ Lubrication by grease or oil
- ▶ 3kg and 5 kg tanks
- ▶ Possibility of mounting a progressive distributor or a reverser on the pump body
- ▶ Non-return valves incorporated at both outlets
- ▶ Integrated pressure gauge
- ▶ Removable filter
- ▶ Visual level

Description

Manually operated, double outlet piston pump with filling connection.



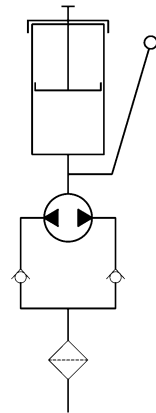
Design and operating principle

The pump is designed to accommodate two different tank capacities, 3 and 5 kg, with the advantage of incorporating an internal grease pusher in both cases to avoid air pockets when the pump is running on grease. A G 1/2 connection allows filling from the outside without opening the lid. The 4 holes located at the back of the pump allow it to be anchored to a wall or a plate.

It is a piston pump, operated by an external lever which causes the internal piston to move alternately towards the two outlets and therefore ensures lubrication.

Installation

Although the swing radius of the lever is small, it must be installed in a location with sufficient space to operate it. Consideration must also be given to opening the cover for maintenance.

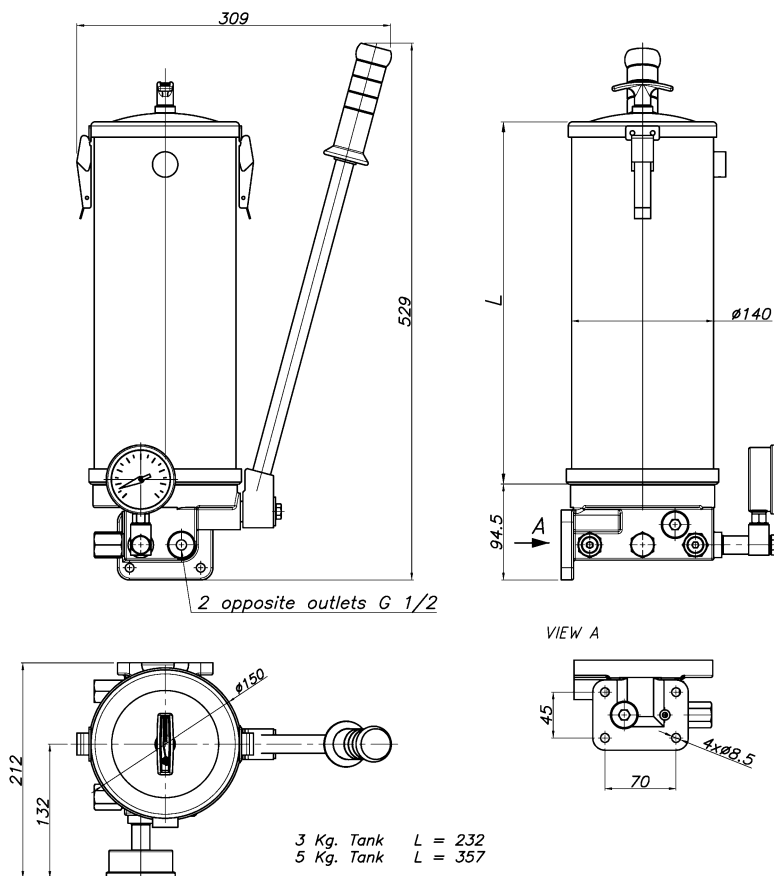


Specifications

Maximum working pressure	400 bar
Recommended working pressure	250 bar
Filling connection	G 1/2
Outlet connection	2 x G 1/2
Injection per cycle	3 cm ³
Weight	8 kg (pump only)

Dimensional drawing

Dimensions in mm



Ordering information

ADD CODE DEPENDING ON ASSEMBLY

	BM-	X	X	X	-XX
Lubricant					
Oil		A			
Grease		G			
Tank					
Tank 3 kg				3	
Tank 5 kg				5	
Accessories					
Small overpressure reverser C03					I
Option without accessories					N
Special code					
For non-standard elements					-XX