

Applications

These types of pumps are perfect for lubrications that include a large number of greasing points on conveyor belts for mining, or steel mill rolling mills.

Features

- ▶ Possibility of different tanks of 60 y 100 kg. Body made of cast aluminium according EN 1706 - AC-43100.
- ▶ Possibility of using oil or grease
- ▶ Different level options, visual level, electrical level of maximum, minimum and analog level.
- ▶ Different electric motors and reductions depending on the flow rate and the lubricant chosen
- ▶ Pressure control

Descripción

Large flow pump especially suitable for demanding working conditions (24 h/d) and with a large number of grease points. Its multiple variables offer a multitude of possibilities in terms of lubrication.

Design and operating principle

It is a piston pump with motorized drive, the engine gives movement to the chosen reduction, rolls more pinion, displacing a plunger which produces the injection of grease or oil.

Three models of deposit, 60, 100 and 200 kg with various types of levels depending on whether we grease with oil or grease, are an added value to allow greasing a prolonged period of time without maintenance.

An internal filter, an overpressure valve and a pressure gauge complement the control of this pump.

Installation

The installation of this pump must be carried out in a place with sufficient space for maintenance.

The pump is provided with legs made of cast aluminum of high resistance according to EN 1706 - AC-43100 with four lower screws to anchor it to the ground directly or on a bench.



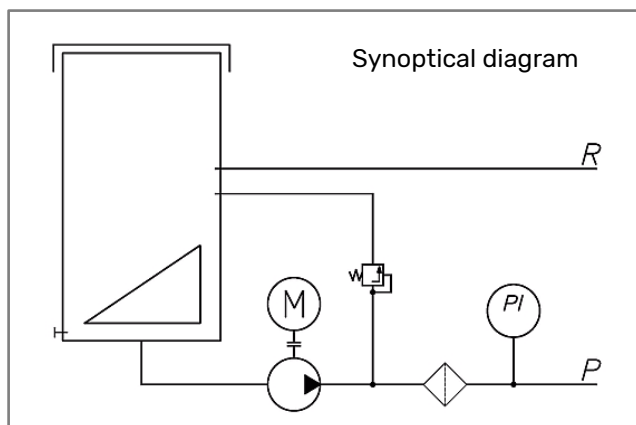
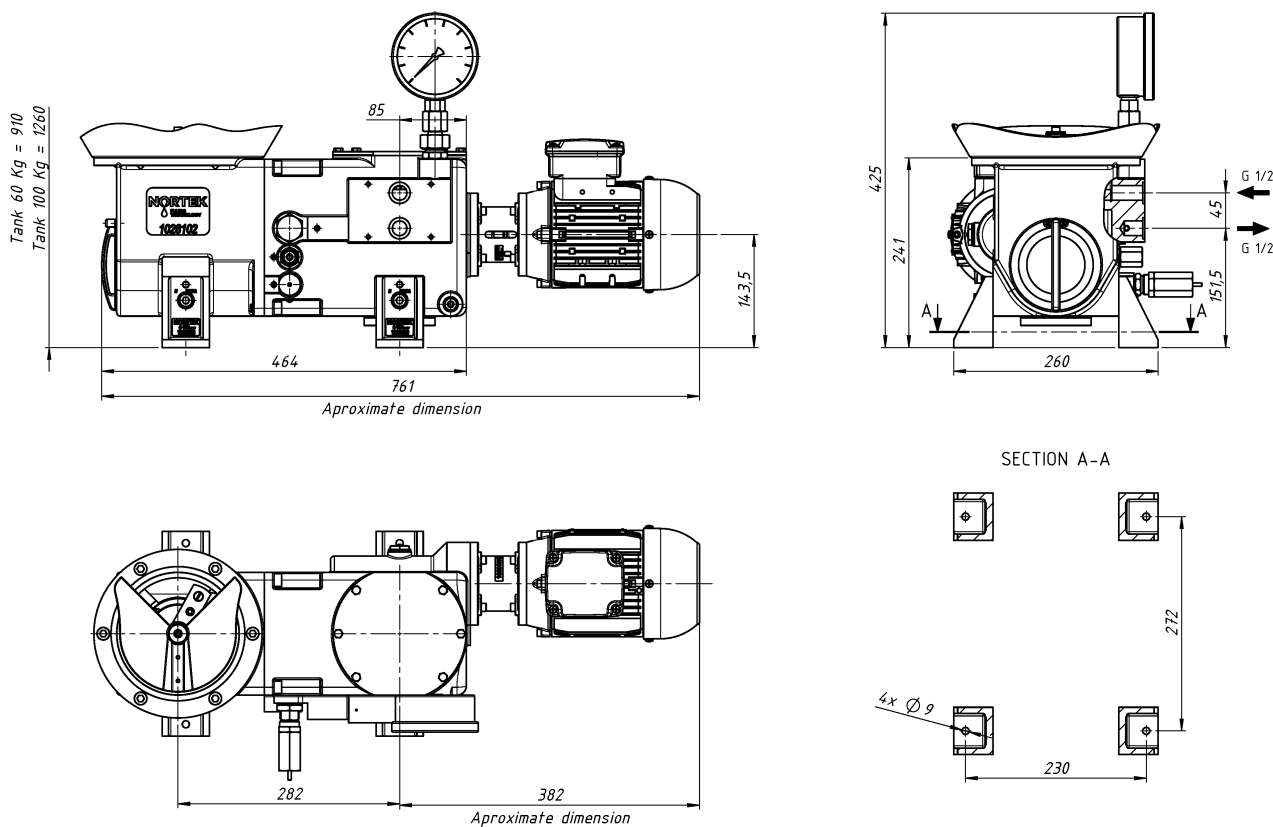
Specifications

Recommended working pressure	250 bar
Maximum working pressure	400 bar
Connection	1/2" bsp
Approximate weight	30 kg. (without tank and motor)
Recommended temperature	-20 °C / +80 °C

Flows			
Motor (kW / Size)	Reduction	Flow (50 Hz)	Flow (60 Hz)
1,5 kW / 90L	1 : 7,5	31 kg/h	38 kg/h
1,5 kW / 90L	1 : 10	24 kg/h	29 kg/h
1,1 kW / 90S	1 : 15	6 kg/h	9 kg/h
0,75 kW / 80B	1 : 20	12 kg/h	14 kg/h
0,55 kW / 80A	1 : 30	8 kg/h	10 kg/h
0,37 kW / 71B	1 : 40	6 kg/h	7 kg/h

Dimensional drawing

Dimensions in mm



Ordering information

ADD CODE DEPENDING ON ASSEMBLY

	B38-	X	X	XXX	X	-XX
Lubricant						
Oil		A				
Grease		G				
Flow 50 Hz (60 Hz) (*)						
24 (29) kg/h			A			
12 (14) kg/h			B			
8 (10) kg/h			C			
6 (7) kg/h			D			
Tank (**)						
Tank 60 Kg				060		
Tank 100 Kg				100		
Accessories						
Reverser					I	
Progressive distributor					P	
Without accessories					N	
Special code						
For non-standard elements						-XX

(*) 4-pole motor at 1500 rpm.

(**) Oil tanks come by default with a visual level and a digital minimum level. Grease tanks come with a digital level sensor.

Accessories

Reversers available for this pump are:

Specification	Reference
Electromagnetic reverser	CE70
Pneumatic reverser	CN70

Progressive distributors available for this pump are:

Specification	Reference
Progressive distributor 0,11 cm ³	DP11
Progressive distributor 0,2 cm ³	DP20
Modular progressive distributor	DPM