

Air-oil modifiable progressive distributor

Serial **338XX43**

Air-oil equipment » Progressive distributors



Applications

- Distributions of lubrication in industrial machinery, such as roller conveyors, straightening machines or cushions.
- Installations in the paper industry, steelworks, and quarries can be used this type of products with high guarantees of a suitable lubrication

Features

- Modular design
- High versatility
- Progressive and uniform lubrication
- Rugged body in EN 10087-11SMnPb30
- Large greasing capacity, progressive between 6 and 16 outlets



Description

This progressive air-oil distributor has a mixing plate attached to our distributor ref. 337XX43.

The progressive distributors are piston type, which make a clean and exact distribution of lubricant.

The progressive distributor takes its name because the supply of lubricant to the lubrication points occurs in progressive order.

This progressive offers a high versatility due to its modular design, it allows to exchange the lubrication modules according to the amount of lubricant required, allowing in a single equipment to have several ranges of flow.

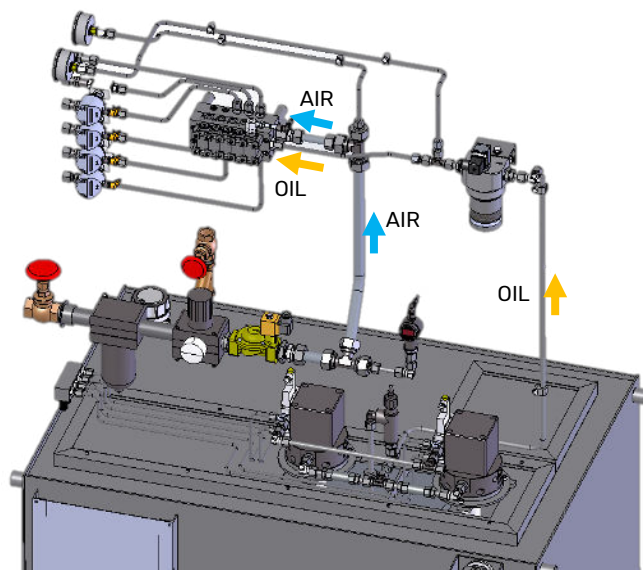
The entry and exit of the lubricant is made from the progressive distributor ref. 337XX43, while the air inlet and the outputs of the air-oil mixture are made in the lower mixing plate 338XX43, upon entering the lubricant acts on the first piston causing the movement of it, which forces the displacement of the following pistons, providing flow to the mixing plate and therefore to the outputs, causing their progressive and continuous movement as long as there is lubricant input from the entrance.

The blockage of a single piston due to lack of lubricant, entails blocking the entire distributor. The solution simply consists of adding a detection system in a single plunger to be able to control all the progressive one.

Installation

Always need to be installed in a progressive pumping system, either primary or secondary distribution, the input of lubricant can be done from a pump under pressure or from another progressive, when acting as a secondary progressive, distributing proportionally the flow received between the outputs enabled . The outputs are enabled from inside, blocking the outputs that do not interest.

Primary distribution

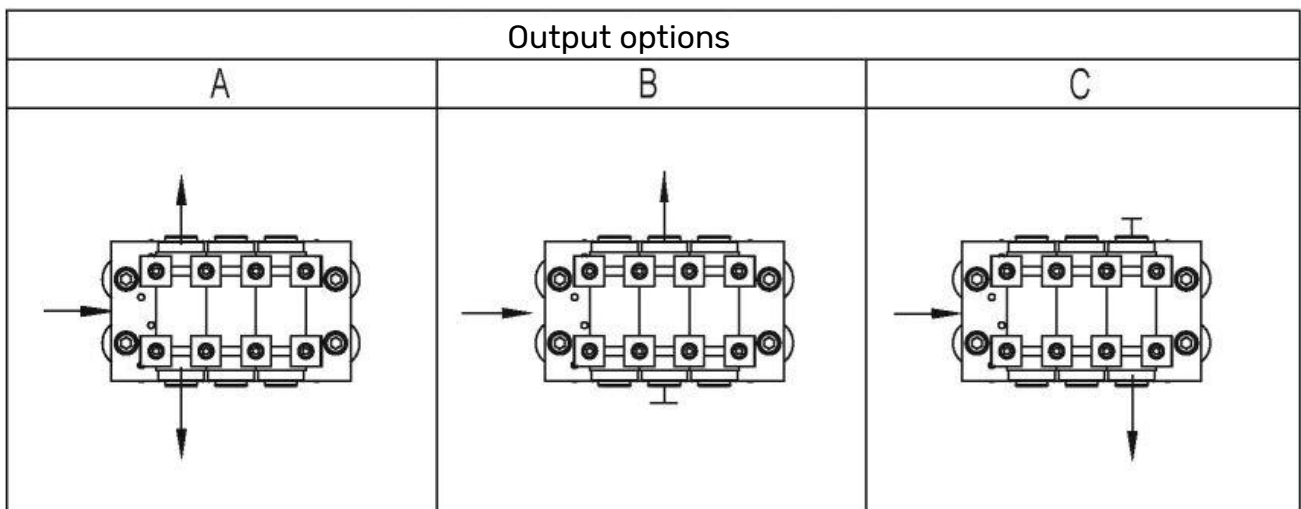
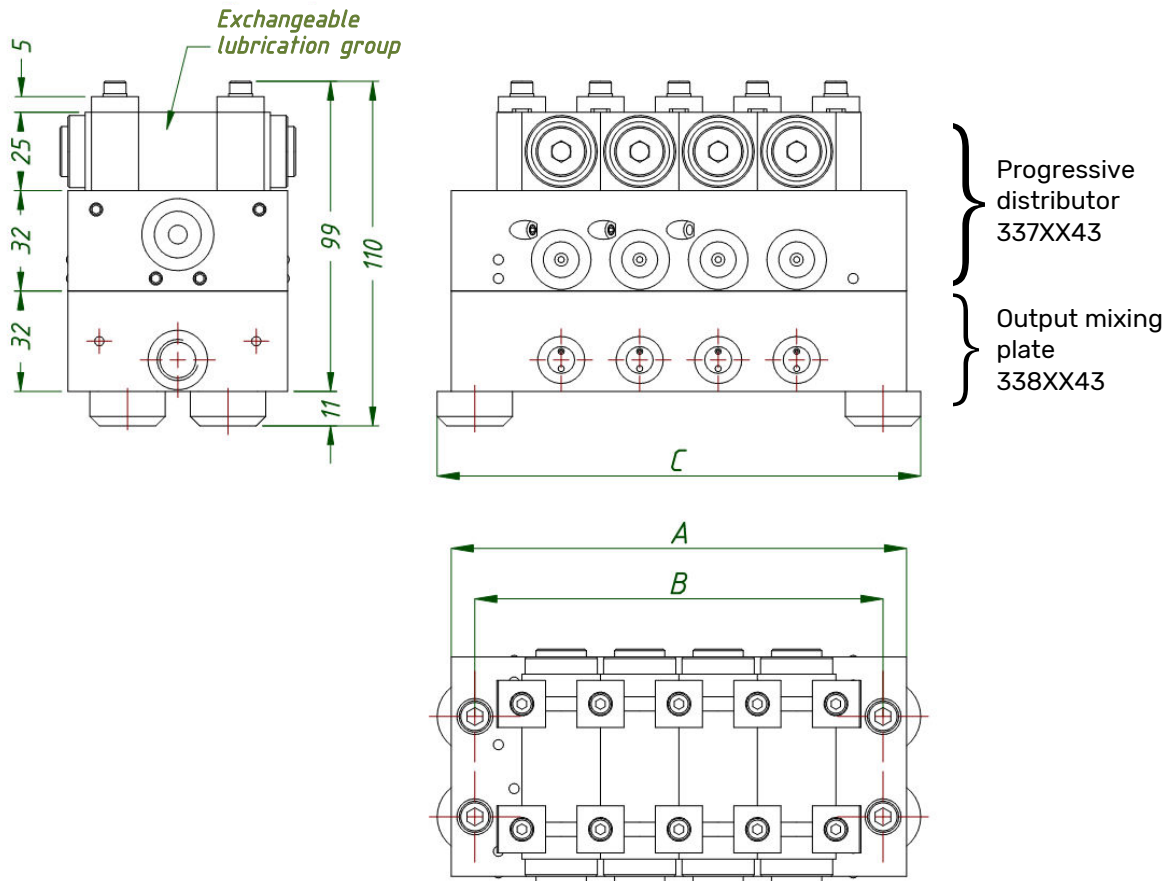


Specifications

Number of departures	From 6 to 16
Outflow per piston	From 0.09 cm ³ to 1.1 cm ³
Minimum work pressure	10 bar
Maximum working pressure	200 bar
Input connection	1/4" bsp
Output connections	1/8" bsp
Qualities	Galvanized ISO 2081 – Fe/Zn12/A

Dimensional drawing

Dimensions in mm



(Figure 1)

Information for the order

N° outputs	Weight	A	B	C	Reference for mixing plate
6 (3+3)	2.2 Kg	120	105	129	3380643
8 (4+4)	2,6 Kg	145	130	154	3380843
10 (5+5)	3 Kg	170	155	179	3381043
12 (6+6)	3,3 Kg	195	180	204	3381243
14 (7+7)	3,7 Kg	220	205	229	3381443
16 (8+8)	4,1 Kg	245	230	254	3381643

(*) (See Figure 1)

Specifications	Reference for mixing plate	Ouput options
Distributor model	3 3 8 X X 4 3	X
Output options :		
Free piston option		A
Right half-closed piston option		B
Left half-closed piston option		C

Accessories

Specificacions	Reference
Weldable support	3236019
Modulable progressive distributor	337XX43
2 outlets union	3380012
3 outlets union	3380013

Order example

	Reference
Progressive distributor of 6 outlets with :	
First piston with option of outlets A	
Second piston with option of outlets B	
Third piston with option of outlets A	
	3380643-A-B-A

Note: This air-plate must always be connected with our progressive 337XX43.